

USER MANUAL
Microsoft Dynamics NAV
Menu Permission Viewer

Contents

1. Introduction..... 2
2. Description..... 3

COPYRIGHT NOTICE

Copyright © 2012 SAN Business Solutions,

All rights reserved

www.sanbs.nl

1. Introduction

This User Manual will introduce you to the Tool “Menu Permission Viewer” (MPV) for NAV versions from **Navision Attain 3.6 to MS Dynamics NAV 5.0.**

MenuSuites contain menus that enable users to navigate and perform actions in the Microsoft Dynamics NAV.

You can assign menus to users in Navision only using the Navigation Pane Designer. You click the menu button of the menu that you want to assign to one or more users and then click Assign Users. In the Assign Users window, in the Assign field, you place a check mark for each user that you want to assign the menu. You must repeat this procedure for each of the menus that you want to apply to one or more users. In this case, you do not have the ability to do a search or filter users, you can only scroll users list.

Imagine that you have dozens of menus and a few hundred users.

Do you have a complete overview of the users who can access a specific menu?

With the Tool “Menu Permission Viewer”, you will have this possibility.

For additions, comments, suggestions and requests for revisions, please send Email to info@sanbs.nl

2. Description

Menu Permission Viewer includes:

- the software component MPM.dll
- FOB-, TXT files incl. 6 Tables, 6 Forms, 2 Reports, 1 Codeunit.

To register MPM.dll:

- Copy the MPM.dll to the MS Dynamics NAV install folder (CSIDE Client or 60).
- Start Command Prompt as Administrator and run the following commands:

```
regasm /tlb: MPM.tlb "C:\Program Files\Microsoft Dynamics NAV\CSIDE Client\MPM.dll"
```

```
gacutil /i "C:\Program Files\Microsoft Dynamics NAV\CSIDE Client\MPM.dll"
```

Regasm.exe is the Assembly Registration tool a part of .NET Framework.

Gacutil.exe is the Global Assembly Cache tool, located in:

C:\Program Files\Microsoft SDKs\Windows\v6.0A\bin.

You will be get following messages after successful registration:

Types registered successfully.

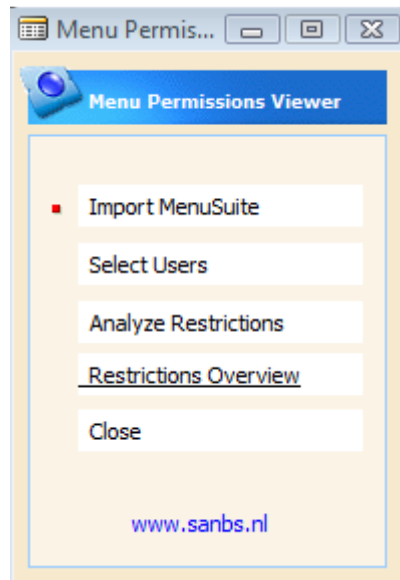
Assembly exported to 'C:\Program Files\Microsoft Dynamics NAV\60\MPM.tlb', and the type library was registered successfully.

Assembly successfully added to the cache.

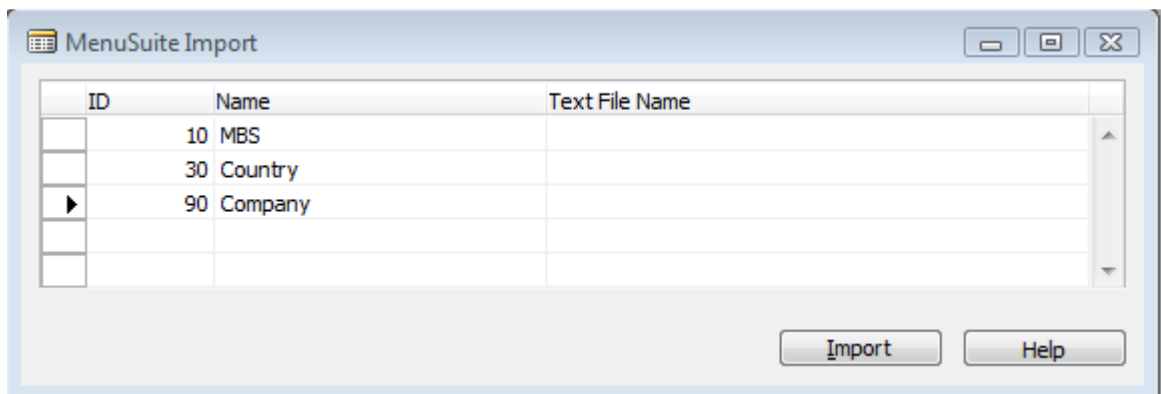
How to use Menu Permission Viewer

The following steps describe how to use MPV tool:

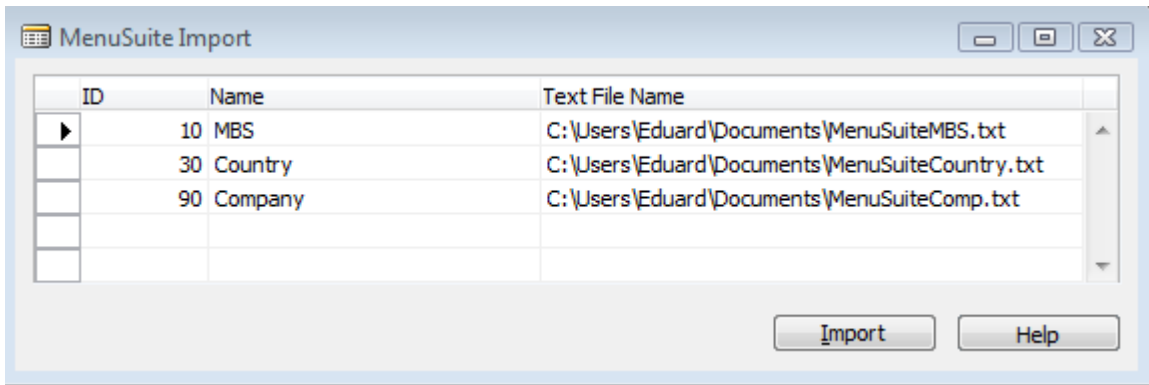
- Go to **Tools, Object Designer, MenuSuite** and export all the MenuSuites as text file.
- Run Form **Menu Permission Viewer**



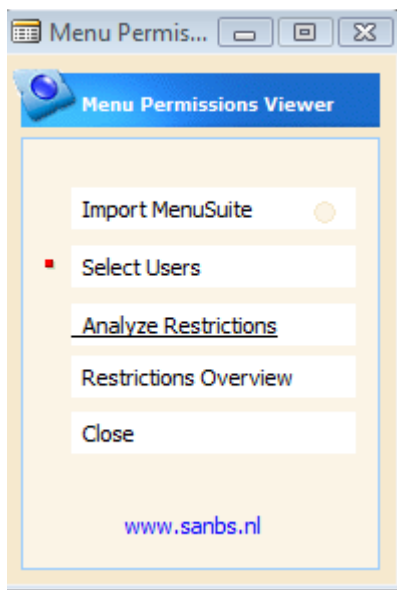
- Click **Import MenuSuite**. The MenuSuite window opens and you will see all the MenuSuite objects of your database.



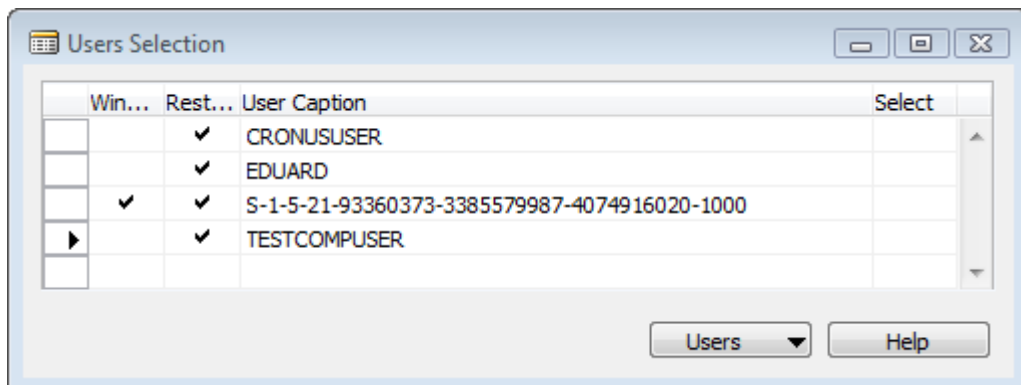
- Click the Assist-Button to the right of the field **Text File Name** and then select location of exported MenuSuite text files.



- Click the **Import** button and when import process is finished close the window.
- Click the **Select Users** button.

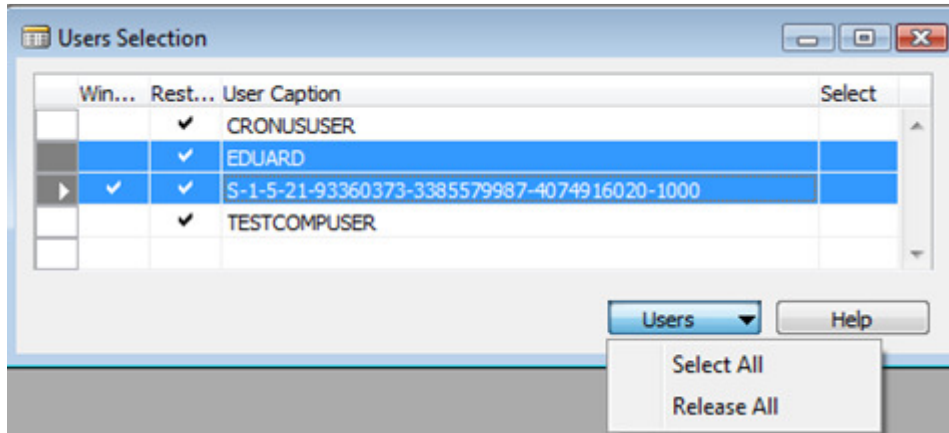


- The User Selection window appears, showing all the Users of your database with Windows- or Database Logins. Here you can see whether **User Menu Level Restriction** exists for the current user.

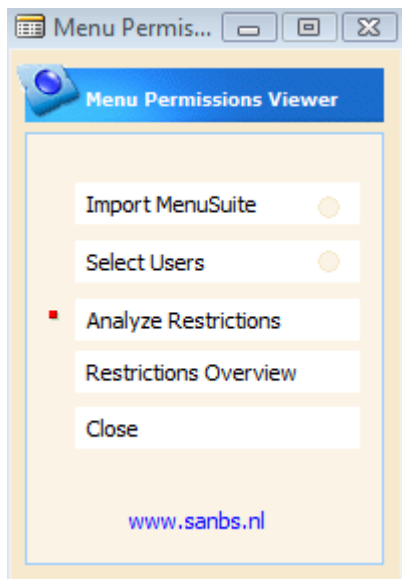


Place a check mark **Select** by the name of the user you want to show on the permissions matrix.

You can use the button **Users - Select All** to select more than one lines.
Only the users with “**Restriction Exists = Yes**” will be selected.



- Click the **Analyze Restrictions** button. The program will read and analyze all records in **User Menu Level** system table.



- Click the **Restrictions Overview** button. The **User Restrictions Matrix** appears, in which you can see (change) the user permissions. From this window it is also possible to export data to Excel.

